



All the Way & Halfway Residence Halls



27-29 Howland Road, Marlboro, VT | 4,350 sf each

Two contiguous residence halls with 20 rooms and a one-bedroom apartment with its own kitchen, bath, and separate entrance. The dorms are connected via an interior hallway, with a large common room and deck at the west end.

- All the Way has 11 rooms (four doubles, seven singles), common room, kitchen, laundry room, and three baths.
- Halfway has nine rooms (five doubles, four singles) and three baths.
- The apartment can double as a dorm space, adding three more bedrooms
- Two storage rooms
- All the Way's large outdoor deck is ideal for socializing.
- Fiber internet
- Maintained by Potash Hill's on-site facilities team

For more information or to schedule a tour, contact

Brian Mooney
Managing Director

bmooney@potashhill.org
(802) 258-9211 (office)





Happy Valley & Schrader Residence Halls



34-36 Random Road, Marlboro, VT | 4,000 & 4,700 sf

Featuring 18 recently-renovated dorm rooms, Happy Valley and Schrader sit near the center of campus, nestled amidst apple trees and the wooded hillside.

- Happy Valley includes:
 - Seven dorm rooms: two singles and five doubles that are large enough to be triples
 - Spacious common room with south-facing, floor-to-ceiling windows and new carpeting
 - Three baths, one of which is fully ADA accessible
- Schrader includes:
 - Eleven rooms, two of which have decks
 - New hardwood floors and welcoming common room
- Fiber internet
- Maintained by Potash Hill's on-site facilities team

For more information or to schedule a tour, contact

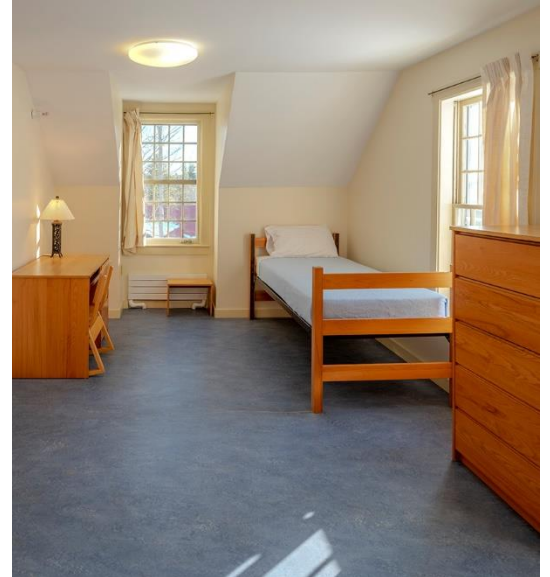
Brian Mooney
Managing Director

bmooney@potashhill.org
(802) 258-9211 (office)





Hendricks House



13 Howland Road, Marlboro, VT | 2,700 sf

Built around 1855, Hendricks is one of the first buildings you see as you enter campus. An impressively flexible space, it can be a dorm and/or an apartment, and it can be used for offices, classrooms, and studios.

- First level has two baths and a kitchen, along with four rooms that can be bedrooms, studios, or offices
- Upstairs is divided with a private room on one side, and two rooms and a bath on the other
- Spacious front porch for gatherings
- Fiber internet
- Maintained by Potash Hill's on-site facilities team

For more information or to schedule a tour, contact

Brian Mooney
Managing Director

bmooney@potashhill.org
(802) 258-9211 (office)





New Residence Hall



63 Howland Road, Marlboro, VT | 11,040 sf

This newly-constructed, HGA-designed Residence Hall is part of the award-winning, state-of-the-art Reich complex. The New Dorm features 17 airy, light-filled rooms, a sparkling kitchen, and inviting shared spaces in a bright, comfortable configuration.

- 17 rooms (16 doubles, 1 single) on two floors
- Spacious common room with kitchen
- Bathrooms with private toilets and showers on both floors; two baths are fully ADA accessible
- Elevator, basement lobby, and laundry room
- Energy efficient geothermal green building w/ passive solar gains strategy and LED lighting
- Fiber internet
- Maintained by Potash Hill's on-site facilities team

For more information or to schedule a tour, contact

Brian Mooney
Managing Director

bmooney@potashhill.org
(802) 258-9211 (office)





Out of the Way Apartments



420 Theater Road, Marlboro, VT | 5,000 sf

Out of the Way is one of Potash Hill's newer residential buildings, offering five well-equipped apartments tucked into a beautiful wooded area at the top of campus.

- 5 one-bedroom apartments, each with kitchenette and bath
- Common laundry room and social area designed to accommodate both small and larger group activities
- Private entrance to each apartment
- One unit is ADA accessible
- Lovely forest views and golden southern light
- Fiber internet
- Maintained by Potash Hill's on-site facilities team

For more information or to schedule a tour, contact

Brian Mooney
Managing Director

bmooney@potashhill.org
(802) 258-9211 (office)





Random North & South Residence Halls



112-126 Random Road, Marlboro, VT | 4,800 sf each

These two dorms feature a total of 18 comfortable rooms and two apartments. Quick access to the campus center, as well as the woods and trails.

- Random North includes:
 - Nine dorm rooms (seven doubles and two singles)
 - Two-bedroom apartment with kitchen, bath, AC, and private entrance
- Random South includes:
 - Nine dorm rooms (seven doubles and two singles)
 - Common room kitchen
- Both have decks on north and south sides
- Fiber internet
- Maintained by Potash Hill's on-site facilities team

For more information or to schedule a tour, contact

Brian Mooney
Managing Director

bmooney@potashhill.org
(802) 258-9211 (office)

